



REMINDER: HOLLOW TINING - APR 2024

The Pearl Valley golf course, the driving range, The Valley Restaurant and the Pearl Valley swimming pool will be closed for the duration of hollow tining from Sunday, 14 April up to and including Friday, 26 April. These facilities will reopen on Saturday, 27 April 2024. The Pearl Valley swimming pool, however, will remain closed for the winter season.

The Pearl Valley gym, Back's Restaurant and Deli will be open during this period.

Winter season golf operating hours:

The first tee-off time: is 08:00 AM, with the last 18-hole tee-off time at 1:30 PM.

The driving range will be open from 07:30 AM, and the last balls will be given at 5:30 PM. The range will close at 06:00 PM.

Please note that the golf course will be closed on Mondays during winter except for the driving range, which will operate from the members' end from 09:00 AM to 05:00 PM.

The Valley Restaurant winter season operating hours:

- Mondays:

The Valley Restaurant: Closed

Coffee station: 07:00 – 17:00

Halfway House: Closed

- Tuesday – Sunday:

The Valley Restaurant: 08:00 AM – 9:30 PM (last food order at 8:45 PM – last bar order at 9:00 PM)

Halfway House: 07:00 AM – 5:00 PM



PEARL VALLEY GOLF

Pearl Boys High's 1st golf team won the Affie 2024 golf day last week.

Congratulations to Pearl Valley Academy students Gherry Rabie, Joshua Woof, Gerhard van der Merwe, and Francois du Toit, who are all part of the team.






Under Armour

BREAKING PAR SERIES

9-Hole event | Par 36 | All holes are par 4




15:00
WINTER MONTHS

15:30
SUMMER MONTHS

At the first event, all participants will compete from the 25-meter tee. The goal is to play 9-holes and score 36 or lower. The desired score will allow players to move on to the 50-meter tee in the next event. The participants who do not achieve the target score will remain on the same tee for the next event. The game aims to get juniors to score from a close distance and advance further away from the green once the target score is met.

12 MAY

16 JUNE

14 JULY

25 AUG

22 SEPT

13 OCT

17 NOV

15 DEC

THE COLOUR OF THE TEE MARKERS WILL INDICATE EIGHT DIFFERENT COURSES

25m		50m		75m		100m
125m		150m		175m		200m



YEARLY SUBSCRIPTION FEE OF R1500

INCLUDES
Grading caps
Under Armour golf shirt
Great prizes at each event
Snacks and drinks

ENQUIRE NOW SEVEY LINKS
Sevey.Links@pearlvalley.co.za
082 214 8014



THE PEARL VALLEY CONFERENCE VENUE

TUES 30 APRIL | 18:00 for 18:30



KAREN ZIDD

UNPLUGGED Show



R350 PER TICKET

Complimentary Stella Artois beer or glass of KWV wine included in the ticket price

[CLICK HERE TO SECURE YOUR SPOT](#)

Limited tickets available

CULT CULT

THE VALLEY
RESTAURANT

ITALIAN
Nights

EVERY TUESDAY
FROM

17:00

MAKE YOUR RESERVATION

WhatsApp: 071 644 6743 | Call: 021 867 8000

ENJOY A DELICIOUS
PASTA OR PIZZA
FOR JUST

R 135

INCLUDES A
COMPLIMENTARY

Dessert

Bookings are essential

WhatsApp: 071 644 6743 | Call: 021 867 8000

UP NEXT *at* SELA VIE

FREEDOM FRIDAYS

BINGO

DINNER-TO-DOOR



FREE-DOM FRIDAYS

5 APRIL | 14:00 - 17:00

GET ONE FREE KIDS MEAL
WITH EVERY REGULAR MEAL ORDERED
*KIDS MUST BE UNDER 12
SIT DOWN ONLY



BINGO NIGHT *at* SELA VIE

11 APRIL | 18:30

R350 PER PERSON
SELA VIE INVITES YOU FOR BINGO NIGHT!
THIS INCLUDES A 2-COURSE MEAL AND 4
ROUNDS OF BINGO WITH PRIZES!
MAKE SURE TO BOOK YOUR SPOT

DINNER *to your* DOOR

Monday - Thursday | Directly to your door!
ONLY 30 PORTIONS AVAILABLE PER NIGHT



MONDAY
Roasted butternut pasta,
creamy feta & roasted
pumpkin seeds
R300 for 2 people

TUESDAY
Roasted sweet potato,
grilled chicken, fresh baby
spinach, chickpeas with
pickled onions
R300 for 2 people



WEDNESDAY
Grilled prawn bowl with sushi
rice, edamame beans, avo,
pineapple and nori mayo
R350 for 2 people

THURSDAY
Creamy beef stroganoff
with pasta, mushrooms &
fresh parsley
R300 for 2 people



Kids Menu



MONDAY: Bacon & feta Pizza
TUESDAY: Creamy beef Pasta
WEDNESDAY: Cheese burger & fries
THURSDAY: Chicken & mushroom pasta

R90 PER CHILD



DELIVERIES POWERED
BY PLATINUM WHEELS

Book now

**JUMPING CASTLE | LIVE BIG SCREEN TV
KIDS PLAY AREA AND MORE...**



SATURDAY *chill*n

Come and relax
with your family and friends this Saturday!
From 12h00 until closing...

**WINE TASTING
R55 FOR 4 WINES**



Special offer

**10% DISCOUNT
ON ALL CRUSTED PIZZA
+
BUY 1 GET 1 FREE
BEER ON TAP / GIN ON TAP**



VAL DE VIE
L'HUGUENOT
VINEYARDS

UNwine'd
Friday



SPITBRAAI 
with LIVE MUSIC BY JUAN CASEY

DATE: FRIDAY, 19 APRIL 2024
Book your Spitbraai ticket | R200 per person



10%
OFF

When you purchase 6 bottles of the selected

LA MOTTE CHARDONNAY
or
LA MOTTE SYRAH

orders@lhuguenot.com
www.villagedeli.co.za

Get 10% OFF
when you buy any
six bottles
of the medal wines.

orders@lhuguenot.com
or
www.villagedeli.co.za



Culinaria Chenin Blanc 2023: Gold medal
Culinaria Grand Vin 2020
Culinaria Grand Vin 2021: Double Gold medal and
Trophy winner: South African Wine of The Year
Family Collection Heritage Blend 2021: Gold medal
Special Edition Pinotage 2022: Gold medal
Special Edition Red Blend 2021: Gold medal



Wine OF THE MONTH



POLO CLUB MERLOT | 2022

Order online www.villagedeli.co.za
and receive a 10% discount if you
order six bottles or more!

Discount code: WINEOFTHEMONTH



Leopard's Leap Award winning wines

Recently Leopard's Leap was awarded with the following medals at the China Wine & Spirits Awards - Best Value 2024.



Culinaria Chenin Blanc 2023: Gold medal
Culinaria Grand Vin 2020
Culinaria Grand Vin 2021: Double Gold medal and
Trophy winner: South African Wine of The Year
Family Collection Heritage Blend 2021: Gold medal
Special Edition Pinofage 2022: Gold medal
Special Edition Red Blend 2021: Gold medal

Join our winemaker, Renier van Deventer for an interactive,
relaxed wine tasting with excellent wines and cheese.

Date: 24 April 2024 | Time: 18h00 – 20h00

Tickets: R150 per person (includes wine tasting and cheese)
Place: L'Huguenot Vineyards

Bookings are essential | experience@lhuguenot.com

15% DISCOUNT | ON ALL WINE ORDERS ON THE NIGHT



UNwine'd Friday

L'HUGUENOT
VINEYARDS

VILLAGE
d.e.l.

LIVE MUSIC

Join our wine loving community | from 5pm - 8pm

05
APRIL

MUSIC
by *Newton Theron*

**PAM GOLDING**
PROPERTIES

19
APRIL

SPITBRAAI 
with LIVE MUSIC BY **JUAN CASEY**

Book your Spitbraai ticket
R200 per person

GREEFF

CHRISTIE'S
INTERNATIONAL REAL ESTATE

26
APRIL

MUSIC
by *Richard Brockensha*

RE/MAX
WINE AND WHALES

BOOKINGS ARE ESSENTIAL : experience@lhuguenot.com | 021 876 8037

WINE | BEER | PIZZA | KIDS PLAY AREA | GRAB & GO MEALS

CS BIODYNAMICISTS



Force Plate for monitoring and testing

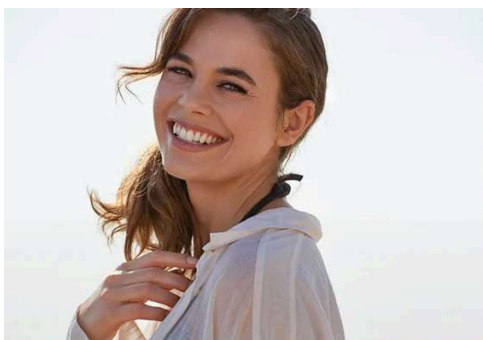
Force plates are used in testing and training to help people achieve their performance goals while avoiding injury. They use sensors to detect differences in forces exerted onto the ground that Biokineticists may not be able to see with the naked eye.

Benefits for rehab and training

Athletes using the force plate benefit from understanding how well they are loading weight on their extremities following an injury or surgery. Knowing how you are loading your limbs helps to guide your training program so you are doing the best things possible to get you back on the field and keep you there. It is not just athletes who benefit from the use of the force plates. Many patients with lower-extremity injuries can benefit from this technology. Force plates are a great tool to assess discrepancies between loading, jumping, force development, and symmetry between the left and right sides of the body.

If you require further information, please contact the CS Biokineticists team at 0764087608 / 0662680611 or send an email to csbiokineticists@gmail.com

CAMELOT SPA



APRIL
SPECIALS

Polished To Perfection

45min Nailcare & Gelish
75min Gelish Pedicure

R990 | Save R160

The Reviver

60min Signature CBD Wellness Massage
30min Thalgo Hydra-Radiance Facial

Includes a CBD Shot

R1 600 | Save R320

Val de Vie Estate
021 867 8001
valdevie@camelotspa.co.za
www.camelotspa.co.za

Valid 1 - 30 April 2024.

For enquiries, contact the team at:
- Email: valdevie@camelotspa.co.za
- Phone: 021 867 8001
- WhatsApp: 066 354 0093

PEARL VALLEY HOA


 021 867 8000
 info@pvhoa.co.za
 debtors@pearlvalley.co.za (Levy Accounts enquiries)
 www.pvhoa.co.za


PEARL VALLEY CONTACT DETAILS

SECURITY

 Security Control Room – 021 867 1201
 Pearl Valley Main Gate - 021 867 1203
 Val de Vie Main Gate - 021 863 6110/6138
 Berg River Registration Centre - 021 863 6137

EMERGENCY CONTACT DETAILS

 ER24 Paarl - 084 124
 Paarl Mediclinic - 021 807 8000
 Medicross Paarl - 021 872 3867
 SAPS - 021 807 4000

 Ambulance - 101 77
 Paarl Fire Brigade - 021 872 2323
 Drakenstein Municipality - 021 807 4500
 Voltano Metering App - 086 186 5826

Disclaimer: Kindly note that the opinions expressed in the communication are those of the authors/advertisers and do not necessarily represent the views of the Pearl Valley Home Owners Association.

Pearl Valley Golf & Country Estate, R301, Wemmershoek Road, Paarl, Cape Town, South Africa 7646, South Africa, 0218678000

[Unsubscribe](#) [Manage preferences](#)