



## FAQ: DRAKENSTEIN REPLACEMENT BIN APPLICATIONS PROCESS

The HOA is aware of the ongoing uncertainty about Drakenstein Municipality's new bin application process, and after directly liaising with them, we have compiled a list of frequently asked questions and answers, which we trust will address the key issues:

**From which date will non-compliant bins (without Drakenstein code and name) no longer be emptied?**

Initially, the date was set for the 18th of September. However, we are now told that from the 25th of September, no private bins will be collected. If a property has two private bins, only one will be collected, as most Pearl Valley properties only pay for one collection but have two bins.

**Will non-compliant bins stop being collected entirely after the deadline?**

We have asked the team to remain patient, given that the service provider, MPACT, is expected to finish the tagging process by the end of September. The team also understands that many swallows return only in October or November and will apply or replace their bins at that time. While continued collection of non-compliant bins won't be officially advertised, leniency will be shown towards residents who aren't permanently residing in South Africa. Thus in some circumstances non-compliant bins will still be collected, but the operator will report it, and the wheelie bin team will replace the bin as soon as possible.

**A resident mentioned they were told that a new bin wouldn't be delivered without taking the old one. Is that true?**

Yes, that is partially true. For non-compliant bins (without names or private bins), it remains the resident's responsibility to use or dispose of them. The municipality will not collect these bins unless the homeowner requests that they be recycled. In cases where a damaged or broken Drakenstein bin is being replaced, a new bin will only be provided once the old one is collected. This is to prevent residents from keeping both bins and receiving double service while only paying for one.

**How can residents with previously purchased Drakenstein bins make them compliant with the name, number, and tag?**

Residents with Drakenstein municipal bins do not need to replace them. Each municipal bin has a barcode linked to the resident's municipal account, which can be verified by the financial office. Only non-municipal bins—such as those purchased from Agrimark, Mambo, Averde, or Wastemart—won't be serviced. MPACT employees will tag bins that are placed outside for

collection on designated collection days. Drakenstein bins are marked with the name "DRAKENSTEIN" and a white barcode linking them to an address or municipal account.

**When residents who are abroad return, can they request the bin be tagged?**

Yes, returning residents can check their bin and request a tag. Tagging will occur on collection days, with bins being tagged while placed outside. There is no need for anyone to enter the property to access the bins.

**Will the supplier continue tagging bins after the initial project is complete?**

No, once the initial tagging project is complete, the supplier will not continue tagging. However, the department will handle ad hoc requests for tag replacements.

**What should residents do to ensure receipt of their bin?**

It is important for the owner, tenant, or neighbour to sign the receipt for the bin, as this signature serves as proof of delivery. Bins cannot be left unattended without a signature. Residents are encouraged to email the designated representatives [Melissa.Nel@Drakenstein.gov.za](mailto:Melissa.Nel@Drakenstein.gov.za) or [Karen.Fredericks@drakenstein.gov.za](mailto:Karen.Fredericks@drakenstein.gov.za), with a date or two when someone will be available to sign for the bins.

Should there be any problems or challenges regarding the implementation or project, residents can email these two representatives as well.

---

## AMBULANCE SERVICE

Stationed at the Val de Vie Evergreen Medical Centre, the ambulance team provides 24/7 emergency care and hospital transport for residents of both Val de Vie and Pearl Valley.

**In the event of a medical emergency:**

- Dial the Security Control Room at 021 867 1201.
- Alternatively, use the Val de Vie App\*: Open the app and press the emergency SOS button (\*This option will soon be replaced by a new Pearl Valley App; further details will be shared soon!)



---

## PEARL VALLEY GOLF

## Hollow tining – September 2024

The Pearl Valley golf course and Halfway House will be closed for the duration of hollow tining from Sunday 15 September, to Friday 20 September, reopening on the 21st. The driving range remains open.

The Valley Restaurant and Pearl Valley ProShop will, however, remain fully operational during this period as per their current business hours.



*Post*  
**HOLLOW  
TINING**  
*special*

**ONLY R895  
PER PERSON**  
*INCLUDING A SHARED CART*

**RESERVE YOUR ROUND**  
golfshop@pearlvalley.co.za  
021 867 8000

**VALID FROM 21  
TO 29 SEPTEMBER**

---

### Congratulations and good luck, Kruger League team

A big congratulations to our Kruger League team, the defending champions from 2023, for making it to the knockout stages of the Boland League!

The next round will take place on the 19th of October at Pearl Valley.

Good luck, team!

---





Perfecting your wedge distances for approach shots involves a mix of technique, practice, and understanding your own game. Here's a guide to help you improve:

**Know Your Yardages:** Start by getting a clear sense of how far you hit each of your wedges. This means spending time on the range to hit multiple shots with each wedge and recording the average distance. Make sure to consider different conditions like wind and lie.

**Master Your Swing Technique:** Focus on a consistent swing for each wedge. Your goal is to have a reliable swing that produces repeatable distances. Work on maintaining a smooth tempo and consistent swing path. Practicing with a metronome can help with timing.

**Control Your Swing Length:** For wedges, your swing length will directly affect your distance. Practice making swings that vary in length (full, three-quarter, half) and note how they affect your distance. Developing muscle memory for different swing lengths will give you more control over your distances.

**Practice with Targets:** On the range, set up targets at various distances that you want to practice hitting. This will help you learn how to adjust your swing and aim based on the distance to the pin. Visualizing your target and working on your accuracy will improve your approach shots.

**Work on Your Short Game:** Improving your chipping and pitching around the greens will help you become more comfortable with your wedges. The more you practice, the better you'll understand how to control your distance and trajectory.

**Utilize Distance Control Drills:** One effective drill is the "clock drill," where you imagine a clock face with the ball in the center. Make swings to different "hours" on the clock to simulate different distances. Another drill involves hitting shots to a specific target and varying the swing length to achieve the desired distance.

**Check Your Equipment:** Ensure your wedges are properly fitted for your game. Factors like shaft length, lie angle, and grip size can all impact your performance. Make sure your equipment is suited to your swing and playing style.

**Stay in the Moment:** When you're on the course, focus on one shot at a time. Trust your practice and make a smooth, confident swing. Overthinking can lead to tension and poor results.

By incorporating these tips into your practice routine, you should see improvement in your wedge distances and overall approach shots.

For any assistance or enquiries, feel free to contact the golfing professionals:  
James Wade at [James.Wade@pearlvalley.co.za](mailto:James.Wade@pearlvalley.co.za) or call 082 435 5831  
Sevey Links at [Sevey.Links@pearlvalley.co.za](mailto:Sevey.Links@pearlvalley.co.za) or call 082 214 8014

---

## THE VALLEY RESTAURANT

A vibrant, stylized graphic for 'Italian Nights' at The Valley Restaurant. The central focus is a dark blue shield-shaped logo with 'THE VALLEY RESTAURANT' at the top, a small Italian flag, and 'ITALIAN Nights' in a mix of bold and script fonts, with a crossed fork at the bottom. Below the logo, three vertical panels are held together by gold clips. The left panel is dark green with a tomato icon and text: 'EVERY TUESDAY FROM 17:00'. The middle panel is white with a basil leaf icon and text: 'ENJOY A DELICIOUS PASTA OR PIZZA FOR JUST R 135'. The right panel is red with a lemon icon and text: 'INCLUDES A COMPLIMENTARY Dessert'. At the bottom, a dark blue banner reads 'MAKE YOUR RESERVATION' with contact details. The entire graphic is decorated with various food icons like tomatoes, lemons, and plates of pasta, and a bottle of red wine pouring into a glass.

THE VALLEY RESTAURANT

ITALIAN Nights

EVERY TUESDAY FROM  
**17:00**

ENJOY A DELICIOUS  
PASTA OR PIZZA  
FOR JUST  
**R 135**

INCLUDES A  
COMPLIMENTARY  
**Dessert**

**MAKE YOUR RESERVATION**  
WhatsApp: 071 644 6743 | Call: 021 867 8000





**ENJOY A CURRY  
WITH A COMPLEMENTARY  
500ML STELLA DRAUGHT**  
EVERY WEDNESDAY *from 17:00*

IN PARTNERSHIP WITH



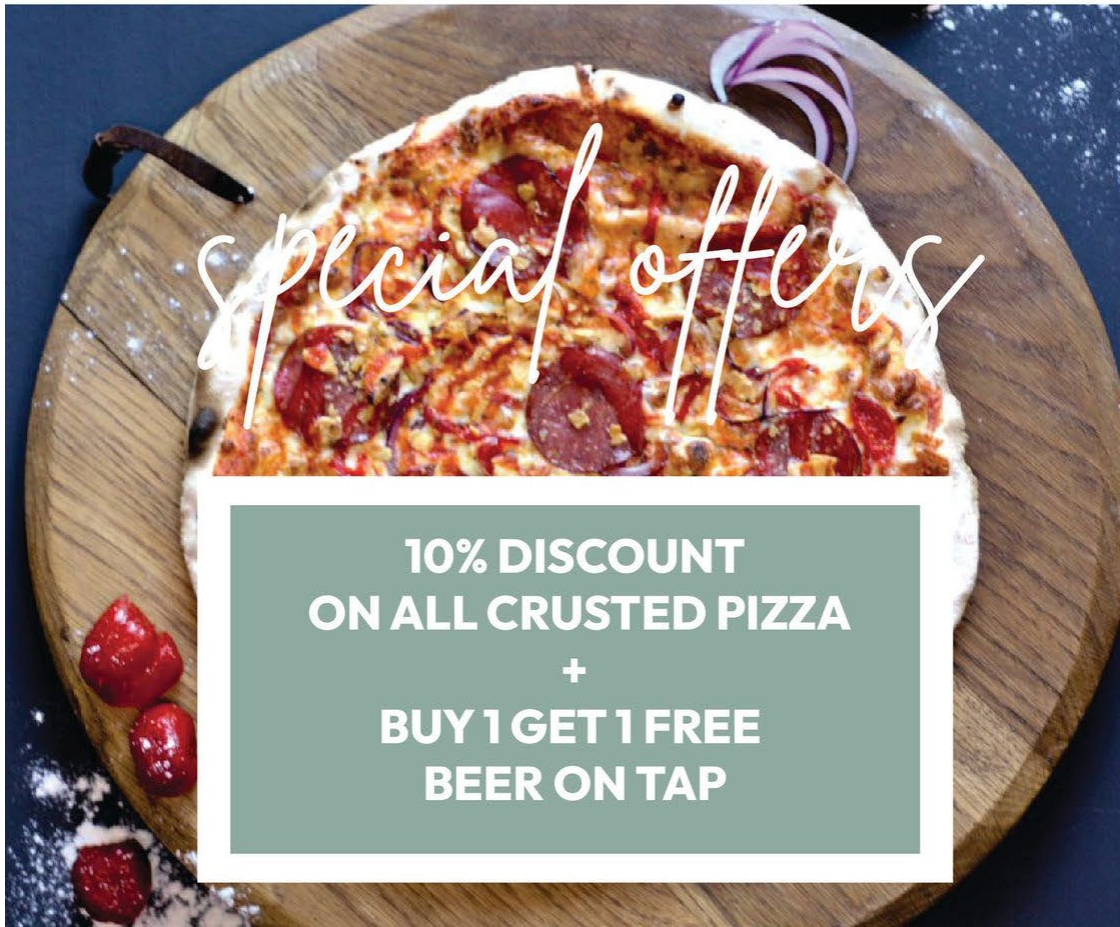
**JUMPING CASTLE | LIVE BIG SCREEN TV  
KIDS PLAY AREA AND MORE...**



VILLAGE  
— deli

**SATURDAY** chill<sup>ing</sup>

EVERY SATURDAY FROM 12H00







# Wine

## OF THE MONTH

POLO CLUB  
SAUVIGNON BLANC 2024

Order online [www.villagedeli.co.za](http://www.villagedeli.co.za)  
and receive a 10% discount if you  
order six bottles or more!

Discount code: WINEOFTHEMONTH



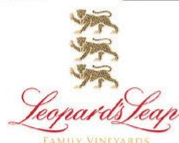
# La Motte

*a culture of excellence*

# 10% OFF

When you purchase 6 bottles  
of the selected

LA MOTTE SYRAH 2020  
LA MOTTE CHARDONNAY 2023



**Get 10% OFF  
when you buy any  
six bottles of the**

**CLASSIC CHENIN BLANC  
CULINARIA CHENIN BLANC  
CULINARIA MCC  
CLASSIC PINOTAGE  
SPECIAL EDITION PINOTAGE**

Offer valid until 30 September 2024

[orders@lhuguenot.com](mailto:orders@lhuguenot.com)  
[www.villagedeli.co.za](http://www.villagedeli.co.za)







VAL DE VIE  
L'HUGUENOT  
VINEYARDS

UNwine'd  
FRIDAY

13 SEPTEMBER 2024

**"LEKKER" SMOKED RIBS  
& BRISKET LOADED FRIES**

**MENU**

SMOKED RIBS (300G) SERVED WITH CHIPS - R220  
LOADED FRIES SERVED WITH BRISKET AND CHEESE - R200

PRE ORDERS ARE ESSENTIAL | E: [experience@lhuguenot.com](mailto:experience@lhuguenot.com) | T: 021 876 8037



VILLAGE  
deli

scan barcode  
Join our WhatsApp Wine Community  
for special offers, events and more...



SMOKED RIBS | WINE | BEER | GIN | PIZZA | KIDS PLAY AREA | GRAB & GO MEALS



ANNO 1209  
L'HUGUENOT  
VINEYARDS

# UNwine'd Friday

VILLAGE  
deli

Let's get together, invite your friends and neighbours, bring the kids and let's celebrate the start of the weekend with a fine selection of wines at cellar door prices, beautiful views and spacious lawns where kids can play and have FUN!

**JOIN OUR WINE LOVING COMMUNITY | FROM 5PM - 9PM**

**06**

SEPTEMBER



## BURGER, FRIES & BEER SPECIAL!

Select your burger of choice: Chicken or Beef Burger served with fries AND 330ml Stella Artois Draught Beer – R70 per offer

**PRE-ORDERS ARE ESSENTIAL**

**PLEASE NOTE: LAST ORDERS TO BE IN BY THURSDAY 17H00**

**experience@lhuguenot.com | 021 876 8037**

**13**

SEPTEMBER



## "LEKKER" SMOKED RIBS AND LOADED FRIES

Smoked Ribs (300g) served with chips R220 or Loaded Fries served with brisket and cheese R200

**Book your table, pre orders are essential:**

**experience@lhuguenot.com | 021 876 8037**

**20**

SEPTEMBER



## BUY 1 GET 1 FREE SPECIAL !

Beer, Brandy, Gin & Vodka

**Book your table: experience@lhuguenot.com | 021 876 8037**

**27**

SEPTEMBER



## SPITBRAAI

Lamb served with potatoes, onions, curry pasta salad, garlic bread and green salad R220 per person

**Book your table, pre orders are essential:**

**experience@lhuguenot.com | 021 876 8037**

**WINE | BEER | PIZZA | KIDS PLAY AREA | GRAB & GO MEALS**





VILLAGE  
deli

# OCTOBER

## DRINKS PARTY

wine, beer & gin tastings, sales, food stalls & live music

R295 PP | 12H00 - 17H00 | 19 OCTOBER | L'HUGUENOT VINEYARDS, VAL DE VIE

PURCHASE TICKETS AT VILLAGE DELI OR WEBTICKETS

SELA VIE

## DINNER *to your* DOOR

Monday - Thursday | Directly to your door!  
ONLY 30 PORTIONS AVAILABLE PER NIGHT



[View menu here](#)



Order via WhatsApp



**WE ARE CLOSED**

SUNDAY 15 SEPTEMBER



---

**CS BIOKINETICISTS**



*Join us for*

# DISCOVERY VITALITY FRIDAYS

FITNESS ASSESSMENTS | VITALITY CHECK | HIV TEST | NUTRITION CONSULTATIONS

**6 AND 20 SEPTEMBER 2024**  
**11 AND 25 OCTOBER 2024**

*Val de Vie Estate Sports & Leisure Centre*



VITALITY HEALTH  
CHECK & HIV SCREENING

**2500**  
*points*

NUTRITION  
CONSULTATION

**1000**  
*points*

VITALITY FITNESS  
ASSESSMENT

**2500-7500**  
*points*

**BOOKINGS ARE ESSENTIAL:** [csbiokineticists@gmail.com](mailto:csbiokineticists@gmail.com) | 076 408 7608



*Join us for*

# DISCOVERY VITALITY FRIDAYS

FITNESS ASSESSMENTS | VITALITY CHECK | HIV TEST | NUTRITION CONSULTATIONS

**6 AND 20 SEPTEMBER 2024**  
**11 AND 25 OCTOBER 2024**

*Val de Vie Estate Sports & Leisure Centre*



VITALITY HEALTH  
CHECK & HIV SCREENING

**2500**  
*points*

NUTRITION  
CONSULTATION

**1000**  
*points*

VITALITY FITNESS  
ASSESSMENT

**2500-7500**  
*points*

**BOOKINGS ARE ESSENTIAL:** [csbiokineticists@gmail.com](mailto:csbiokineticists@gmail.com) | 076 408 7608



## PEARL VALLEY CONTACT DETAILS

### PEARL VALLEY HOA

- 📞 021 867 8000
- ✉️ info@pvhoa.co.za
- ✉️ debtors@pearlvalley.co.za (Levy Accounts enquiries)
- 🌐 www.pvhoa.co.za

### SECURITY

- 📞 Security Control Room – 021 867 1201
- 📞 Pearl Valley Main Gate - 021 867 1203
- 📞 Val de Vie Main Gate - 021 863 6110/6138
- 📞 Berg River Registration Centre - 021 863 6137

### EMERGENCY CONTACT DETAILS

- 📞 ER24 Paarl - 084 124
- 📞 Paarl Mediclinic - 021 807 8000
- 📞 Medicross Paarl - 021 872 3867
- 📞 SAPS - 021 807 4000
- 📞 Ambulance - 101 77
- 📞 Paarl Fire Brigade - 021 872 2323
- 📞 Drakenstein Municipality - 021 807 4500
- 📞 Voltano Metering App - 086 186 5826

*Disclaimer: Kindly note that the opinions expressed in the communication are those of the authors/advertisers and do not necessarily represent the views of the Pearl Valley Home Owners Association.*

Pearl Valley Golf & Country Estate, R301, Wemmershoek Road, Paarl, Cape Town, South Africa 7646, South Africa, 0218678000

[Unsubscribe](#) [Manage preferences](#)